



Carisbrooke Crescent, Etherley Dene, DL14 0RW
3 Bed - House - Semi-Detached
£180,000

ROBINSONS
SALES • LETTINGS • AUCTIONS • SURVEYS

Carisbrooke Crescent Etherley Dene, DL14 0RW

Situated in the charming Carisbrooke Crescent, Etherley Dene, Bishop Auckland, this beautifully presented semi-detached house offers a delightful blend of comfort and modern living. Situated in a popular residential cul-de-sac, the property is conveniently located near town centre amenities, local schools, and colleges, making it an ideal choice for families and professionals alike.

The home boasts three well-proportioned bedrooms, each equipped with fitted wardrobes and storage cupboards, ensuring ample space for your belongings. The modern bathroom is a true highlight, featuring a luxurious Jacuzzi bath with a shower overhead, a stylish vanity unit, and a WC, providing a serene space for relaxation.

The heart of the home is the spacious kitchen/dining room, which comes complete with a range of fitted appliances, including a fridge/freezer, oven, microwave, dishwasher, and washer/dryer. This area is perfect for entertaining guests or enjoying family meals. Adjacent to the kitchen is a generous conservatory, enhanced by bi-fold doors that seamlessly connect to the rear garden. This outdoor space is equipped with electric sockets and security lighting, making it a safe and functional area for gatherings or quiet evenings.

The property is equipped with a modern heating system, operated by a dual fence app, allowing for individual control of radiators in each room, ensuring comfort throughout the seasons. Additional features include sockets in the front driveway for electric vehicle charging, a ring doorbell for added security, and a single garage with an electric roller door, power, and lighting.

This semi-detached house is a perfect blend of style, convenience, and modern amenities, making it a wonderful place to call home.

To arrange a viewing please call Robinsons on 01388 458111











GROUND FLOOR

Entrance Porch

Lounge

14'6" x 13'10" (4.42 x 4.24)

Kitchen/Dining Room

14'9" x 10'6" (4.51 x 3.21)

Conservatory

19'5" x 8'9" 7'8" (5.94 x 2.69 2.36)

FIRST FLOOR

Landing

Bedroom 1

13'8" x 8'4" excluding wardrobes (4.17 x 2.56 excluding wardrobes)

Bedroom 2

9'3" x 6'7" excluding wardrobes (2.82 x 2.02 excluding wardrobes)

Bedroom 3

10'7" x 6'0" (3.24 x 1.83)

Bathroom

EXTERNAL

AGENTS NOTES

Electricity Supply: Mains

Water Supply: Mains

Sewerage: Mains

Heating: Gas

Broadband: Basic 5 Mbps, Superfast 80 Mbps,

Mobile Signal/Coverage: Average -Good

Tenure: Freehold

Council Tax: Durham County Council, Band B (£1891Min)

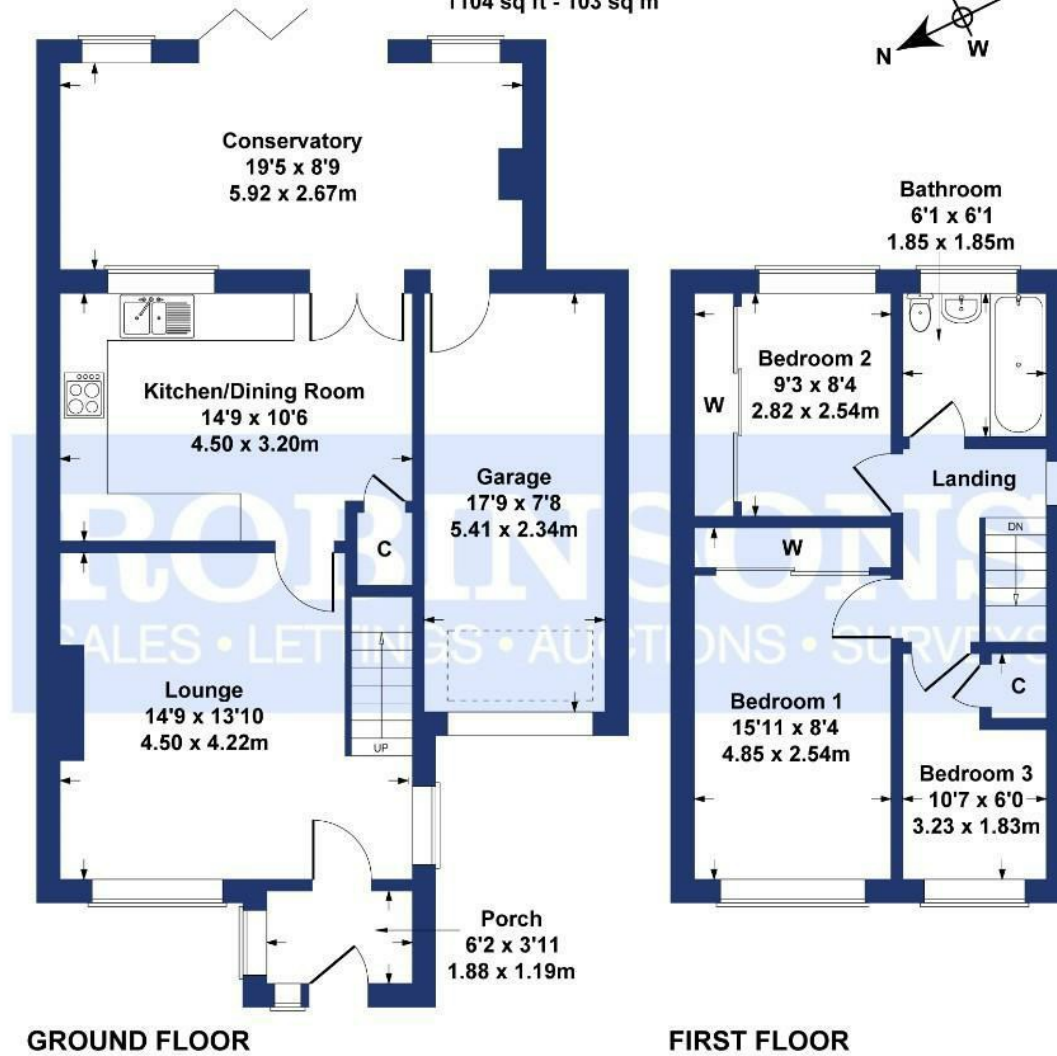
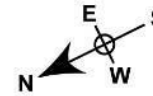
Energy Rating: TBC



Disclaimer: The preceding details have been sourced from the seller and OnTheMarket.com. Verification and clarification of this information, along with any further details concerning Material Information parts A, B & C, should be sought from a legal representative or authorities. Robinsons cannot accept liability for any information provided.

Carisbrooke Crescent

Approximate Gross Internal Area
1104 sq ft - 103 sq m



SKETCH PLAN FOR ILLUSTRATIVE PURPOSES ONLY

All measurements walls, doors, windows, fittings and appliances, their sizes and locations, are approximate only. They cannot be regarded as being a representation by the seller, nor their agent.

Produced by Potterplans Ltd. 2025

Energy Efficiency Rating		Current	Potential
Very energy efficient - lower running costs			
(92 plus)	A		
(81-91)	B		
(69-80)	C		
(55-68)	D		
(39-54)	E		
(21-38)	F		
(1-20)	G		
Not energy efficient - higher running costs			
England & Wales		EU Directive 2002/91/EC	

For clarification we wish to inform prospective purchasers that we have prepared these sales particulars as a general guide. We have not carried out a detailed survey, nor tested the services, appliances and specific fittings. Room sizes should not be relied upon for carpets and furnishings, if there are important matters which are likely to affect your decision to buy, please contact us before viewing the property. Robynsons can recommend financial services, surveying and conveyancing services to sellers and buyers. Robynsons staff may benefit from referral incentives relating to these services.



120 Newgate Street, Bishop Auckland, DL14 7EH
Tel: 01388 458111
info@robinsonsbishop.co.uk
www.robinsonsestateagents.co.uk

